

Noteworthy Furnishings and Designers (328 Cliff Avenue)

- *Interiors by **Dufner Heighes** (Greg Dufner and Daniel Heighes Wismer, Founders)*
- *Kitchen by **Bilotta Kitchen & Home***
- *Lighting designers include **Louis Poulsen, Kelly Wearstler, Flos, Noguchi, Sean Lavin...***



Foyer

Casey Johnson Studio

At the heart of the Studio lies the visionary artist and founder, **Casey Johnson**. With an unyielding passion for blending traditional craft with contemporary aesthetics, Casey creates work that are expressions of artistic vision, embodying harmony between form and function. With a background in Fine Art and Design, Casey's artistic journey has been a tapestry of exploration and innovation which led to the creation of this studio, where he leads a team of talented artisans and craftspeople to help bring his works of art to life.



Breakfast Area

For 58 years, Danish designer **Hans Wegner** conceived memorable, comfortable, stunning furniture for Carl Hansen & Søn, the same company that continues to produce his authentic works today. Known as the “chair-maker of chair-makers,” Wegner was a prolific designer with a unique ability to bring an elegant lightness to sturdy, long-lasting chairs that remains unmatched. After creating two prototypes of his stackable CH20 Elbow Chair (1956), he set the design aside in his archives, where it remained for nearly half a century until Carl Hansen & Søn decided to put it into production for the first time in 2005. Later

Noteworthy Furnishings and Designers (328 Cliff Avenue)

that year, it quickly established itself as a modern classic, winning the ICFF Editors' Award. CH20 features a steam-bent backrest crafted from a single piece of solid wood for ample arm and back support in a variety of sitting positions and form-pressed veneer seat construction for optimal strength and stability.



Formal Dining Room

Using the best natural materials and refined steam-bent methods, **Wishbone** is made to last for generations. In **1944, Hans Wegner** began a series of chairs that were inspired by portraits of Danish merchants sitting in Ming Chairs. One of these chairs was the Wishbone Chair (1949), also known as the “Y” or “CH-24,” which has been produced by the Danish firm Carl Hansen & Søn since 1950. The son of a shoemaker, Wegner was trained as a cabinetmaker before attending the School of Arts and Crafts in Copenhagen, after which he began his career as an architect. Just three years later, Wegner started his own design office, and his work soon caught the eye of Carl Hansen. The Wishbone Chair fit what the Hansen company was looking for to supplement the heavier forms popular at the time. Made in Denmark.



Formal Dining Room

The **Stillfried Monument table** seamlessly blends functionality with sculptural artistry, transforming any space with its minimalist yet striking design. Crafted from sustainably sourced wood, it stands as a testament to both durability and timeless elegance. The table's distinctive design features a uniquely shaped top and legs positioned at varying

Noteworthy Furnishings and Designers (328 Cliff Avenue)

angles, creating a dynamic appearance from every viewpoint. Offered in a selection of wood finishes, the Monument table can be customized to suit a variety of interior aesthetics. This piece embodies Artisan's commitment to innovative design and exceptional craftsmanship, making it a bold and unforgettable addition to any environment.



Kitchen Bar Stools

Even decades after it was first produced, the **CH56/CH58 Stool from Carl Hansen and Son** is still an ideal fit for modern kitchens, bars and restaurants. It creates an inviting atmosphere for social encounters with its soft, organic shape and comfortable leather-upholstered seat. Lightweight and easy to move around any space, the accenting metal ring ensures both stability and comfort for resting your feet, while the legs have been crafted to be thicker where they need to support the construction most.



Formal Dining Breakfront

The Multileg from BC Barcelona is more than modular. Designed in **2006, Jaime Hayon's Multileg** cabinet has simple lines and unique legs with a strong sculptural identity. It can be uniquely configured with twelve elaborate leg options, customizable finishes and colours, and a multitude of interior storage variations. The Multileg is disciplined and practical, and it is a storage system that embraces its many forms. The wood used in this piece is FSC certified.

Noteworthy Furnishings and Designers (328 Cliff Avenue)

Saarinen Tables



Nook off Foyer



Formal Living Room



Third-floor Office

Architect **Eero Saarinen** was a genius at creating expressive sculptural forms. From his TWA Terminal (now the TWA Hotel) at New York's JFK Airport to the Gateway Arch in St. Louis to his **Pedestal Table (1956)**, there's a magic in everything he created. The Saarinen Dining Table, as he explained in a 1956 Time magazine cover story, was designed to "clear up the slum of legs in the U.S. home." Later that year, he completed the Pedestal Table, which stands on a gracefully shaped cast-aluminum base.



Formal Living

It's shocking to think of **Finn Juhl** designing this sculptural chair more than 80 years ago, and the **Pelican Chair (1940)** is still "out there" by today's standards. With graceful curves that wrap the sitter in its embrace, Pelican is true to Juhl's idea that "a chair is not just a

Noteworthy Furnishings and Designers (328 Cliff Avenue)

product of decorative art in a space, it is a form and a space in itself.” The upholstery is hand-sewn onto the frame.



Formal Living

A seating system and family of products that offer endless solutions, **BOB** lends architectural freedom that challenges or adheres to all interior spaces. The multiple award-winning modular seating system cultivates creativity in the workplace and lends comfortable styling to hospitality environments. Designed to add character, and with a boastful personality, BOB is constructed using individually upholstered modules that are completely customizable. A seating system that curves in, curves out, lines up straight, or undulates across the room - BOB's creative possibilities are extraordinary. Dedicated to reinventing the ordinary, designers **Stefan Borselius and Thomas Bernstrand** have engineered furniture that fulfills the desires, dreams, and demands of current design.



Formal Living

In the ten years that have passed by since the Swiss designer **Hannes Wettstein** drew the **Delphi Daybed EJ 450 E-16**, it has already received status as a classic due to its clean and iconic design and its great quality. The Delphi is also available as an elegant daybed.

Originally, the daybed was thought of as a tribute to the rest. This thought has inspired the designer to add an optional long and rounded neck pillow, which makes the daybed even more comfortable to lay on.

Noteworthy Furnishings and Designers (328 Cliff Avenue)



Formal Living

The **BD Barcelona Explorer Side Tables** call to satellites, jelly beans and the playful elegance of Jaime Hayon. Inspired by the Explorer space rocket, their space-age aesthetics and lively personality come out in the three side tables. The tables have an energy and a sculptural identity presented through their functional shape, welcoming colours, and a comfortable scale.



Sunroom

Manufactured by Iacoli, the **Mociun Coffee Table** is a collaboration between **Caitlin Mociun and Jamie Iacoli**. The collection of tables are inspired by unmarked French mid-century side tables seen at auction.



Sunroom

The **Ligne Roset Ploum sofa** is the fruit of much research into comfort. The result is a special combination of two materials: a stretchable covering and ultra-soft foam. This combination, along with the Ploum sofas' truly ample dimensions, provides extreme

Noteworthy Furnishings and Designers (328 Cliff Avenue)

comfort and accommodates different ways of sitting, stretching out or even lying down. As per the designers' wishes, the large settee is asymmetrical in construction: the right-hand backrest is a little higher than the one on the left, whilst the right-hand seat is slightly deeper than the left-hand one and the zip on the rear of the backrest is off-center.



Marlowe's Bedroom

Coffee Table: The Finn Juhl three-legged Eye Table, named for its distinctive shape, was originally designed to complement the 46 Sofa. Its soft, organic curves align seamlessly with the sofa's form, creating a cohesive expression. Yet, thanks to its refined details and timeless character, the Eye Table fits effortlessly into a variety of living room settings. It is available in oak or walnut, with a tabletop in veneer, white nano laminate, or black linoleum.

Dunbar One-Arm Chaise: A leading American furniture designer for over four decades, **Edward J. Wormley** possessed a personal flair for embracing modern trends without a total departure from historical influences. His ability to combine the finest materials with outstanding craftsmanship became the cornerstone of his design statement. Wormley's significant, personal contribution to modern design has earned him a position alongside his noted contemporaries: Harry Bertoia, Charles Eames, George Nelson, Jens Risom, and Eero Saarinen.

Edward J Wormley attended the School of the Art Institute of Chicago from 1926 to 1928 and took his first job in the interior design studio at Marshall Field & Company department store. In 1931, he was recruited by Dunbar and quickly became their Director of Design. Wormley's tenure as Design Director spanned over thirty years and is considered one of the most historically meaningful between a designer and manufacturer.

Rocking Chair: Jens Risom is widely considered to be a pioneer in introducing Danish modern furniture to the United States through early work with the Knoll company and to a greater extent through his own company, which thrived in the 1950s and '60s. The **Jens Risom Rocker (2009)** came about when he approached DWR with an idea for an

Noteworthy Furnishings and Designers (328 Cliff Avenue)

upholstered rocking chair with a high back and sculpted armrests for superb head and arm support and comfort. This piece has a deep, smooth and balanced feeling thanks to a hidden counterweight precisely placed in the front rail. It's adorned with a nine-button tufted back, a nod toward the classic Danish modern aesthetic that can be found in all his work.



Bodhi's Bedroom

The expressive sculptural forms of the **Eero Saarinen Womb Chair and Ottoman (1946)** can also be found in his architecture, from the TWA Terminal (now the TWA Hotel) at New York's JFK Airport to the Gateway Arch in St. Louis. In 1940, the Finnish American and his friend Charles Eames took first prize at the Organic Design in Home Furnishings competition at MoMA. Later that decade, Florence Knoll challenged Saarinen to create a chair that she could curl up in, which led to this iconic design. The Knoll Womb Chair has an enveloping form that continues to be one of the most celebrated and recognized representations of midcentury organic modernism. By applying foam molded over a fiberglass shell, Saarinen created a single-piece form that perfectly facilitates a relaxed sitting posture. Designed by Eero Saarinen in 1946 in response to Florence Knoll's challenge for an enveloping chair.



Playroom

Based on the compact design of earlier studies using steel rods at the Cranbrook Academy of Art, **Florence Knoll's Hairpin Stacking Table (1948)** received accolades in the International Design Competition held by the American Institute of Decorators in the year

Noteworthy Furnishings and Designers (328 Cliff Avenue)

of its inception. This versatile table, reintroduced by Knoll for the first time in decades, features a durable steel base and laminate top. Stacks up to five high.



Primary Bathroom

The **LC7 Swivel Chair (1928) by Le Corbusier** evolved from experiments that included wrapping inner tubes from tires around a steel frame. As the Le Corbusier group refined such trials, sensuous solutions took form. The LC7's padded seat is topped with a curved, amply padded barrel that doubles as backrest and armrest. Each piece is signed, numbered, and as a product of Cassina's Masters Collection manufactured by Cassina under exclusive worldwide license from the Le Corbusier Foundation.



Primary Bedroom

While the **Flag Halyard Chair** has a wonderfully contemporary aesthetic the original design was conceived **by Hans Wegner in 1950**. One idyllic Summer afternoon, while the children were playing on the Danish coast, Wenger began to form the concept of this chair right there in the sand. He later went home to sketch out the design of the seating angles he had created on the beach to form the ultimate lounge chair. The Flag Halyard chair showcases a unique design, as the majority of the chair is diligently woven with 240 meters of continuous halyard flag roping, making it as comfortable as it is durable. Available in multiple options and colors, each chair is made with a solid stainless steel frame, a cozy pillow and can be lined with a long-haired sheepskin to soften the industrial sharpness of the steel. The Flag Halyard Chair is the perfect blend of sophistication and comfort.

Noteworthy Furnishings and Designers (328 Cliff Avenue)

1940's Wingback Chairs recovered in Sheepskin

Likely designed by Alfred Christensen design for Slagelse Møbelværk



Primary Sitting Room



Erica's Office

Designed by Swiss architect **Fritz Haller and Paul Schaerer in 1963**. Made from powder coated steel and chrome plated steel tubes, the **USM Haller system** is built to last for generations and adapt as your needs change. Made in Switzerland.



Andrew's Office

The **AJ52 Society Table** was designed by architect and designer **Arne Jacobsen** (1902–1971) is a master of Scandinavian design, a figure who left a mark with his distinctive and personal style. His masterpieces and great design classics bear witness of his unquestionable talent: the Ant chair, Series 7, Grand Prix, Swan and Egg Chair, all

Noteworthy Furnishings and Designers (328 Cliff Avenue)

produced by Fritz Hansen. Besides the production of furniture, among his major works we remember the AJ lamps for Louis Poulsen and the Cylinda Line of table accessories for Stelton.



Andrew's Office

Supported by a five-point, height-adjustable swiveling base with twin-wheel casters, **Eero Saarinen's Executive Office Chair (1957)** has the signature curvaceous design that made it so revolutionary when it was first introduced. This chair is Intertek Clean Air Certified for its use of low-emitting products.



Andrew's Office

The **CH445 Wing Chair** showcases **Hans J. Wegner's** excellent understanding of material and structural dynamics. The result? A dramatic, sculptural silhouette with instant visual appeal. The Wing Chair's true beauty lies beneath the surface: its solid beech frame enables a variety of seating positions, always providing superb support for the entire body. Slender steel legs, pitched upward, give the chair an ideal resting position.

Noteworthy Furnishings and Designers (328 Cliff Avenue)



Basement

Denmark native **Morten Gøttler** is known for simple pieces with an airy look and exquisite feel. His **Cuba Lounge Chair (1997)** is one such piece, with a clean, smooth profile and handwoven cotton straps. As sturdy as it is alluring from all sides, the chair features a rugged frame assembled with spigot joints and held together by heavy-duty brass hinge mechanisms. Light and flexible, Cuba will be equally at home in modern living rooms or open kitchens. Folds for easy storage. Made in Denmark.



Basement

For 58 years, Danish designer **Hans Wegner** conceived memorable, comfortable furniture for **Carl Hansen & Søn**, the same company that continues to produce his authentic works today. Known as the “chair-maker of chair-makers,” he was a prolific designer with a unique ability to bring an elegant lightness to sturdy, durable furniture that continues to be unmatched. Affectionately known as **the Mama Bear Chair, the CH78 Chair (1954)** was first introduced by Wegner as a variant of his CH71 Chair. An antidote to the often heavy chairs of his time, Mama Bear has a sculptural silhouette defined by a series of inviting curves that offer a warm, welcoming embrace, with a frame, armrests, and legs crafted for stability and sustainability from solid FSC-certified wood. Made in Denmark.

Noteworthy Furnishings and Designers (328 Cliff Avenue)

Wallpapers

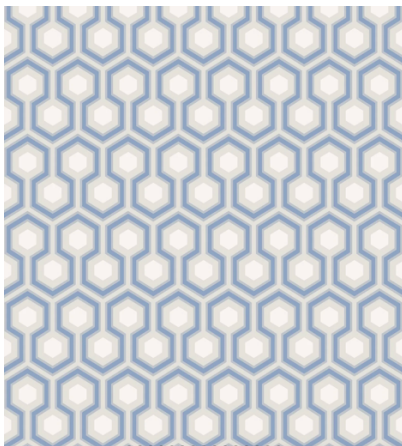
Voutsas, designed by Sasha Bikoff (Dining Room)



Cole & Son Apex Grand in Moss/Gilver (Marlowe's Bedroom)



Cole & Son Hick's Hexagon



Bodhi's Bedroom

Flavor Paper Warhol Butterflies (Kitchen Powder Room)

Noteworthy Furnishings and Designers (328 Cliff Avenue)



Maiden & Moonflower wallpaper by Kiki Smith (Foyer Powder Room)

